

ERRATUM

Volume 147, Number 1 (1994), in the article "Effect of KCl Addition Method on the Pt/KL Catalyst for the Aromatization of Hexane," by Lian-Xin Dai, Haru Sakashita, and Takashi Tatsumi, pages 311–321: On pages 316 and 318, due to a printer's error the shadings in Figs. 4, 5, and 6 are difficult to distinguish. For the reader's convenience the figures are reprinted here.

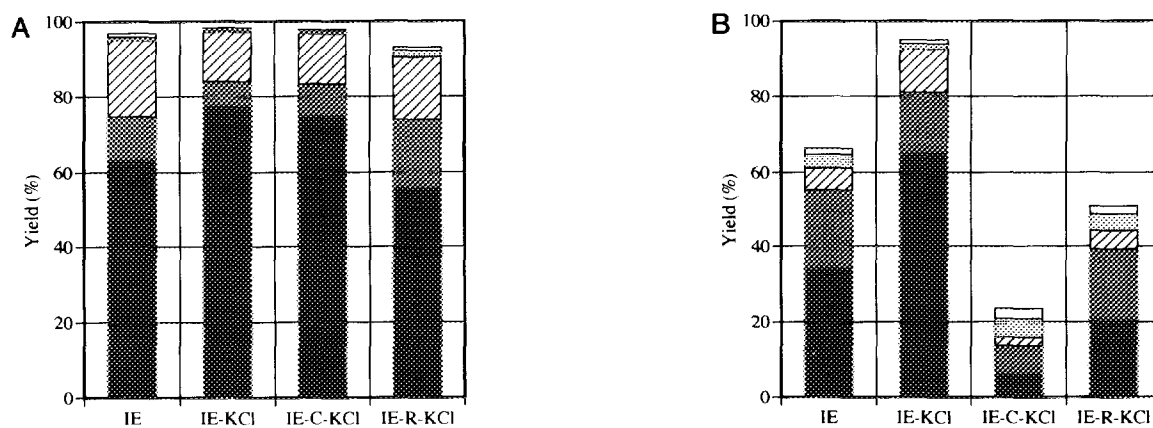


FIG. 4. Effect of KCl addition procedure on catalytic performance. (■) Benzene; (■) *i*-C₆; (▨) C1–C5; (▩) MCP; (□) others. (A) Calcination temperature = 573 K; reduction temperature = 773 K. (B) Calcination temperature = 823 K; reduction temperature = 773 K.

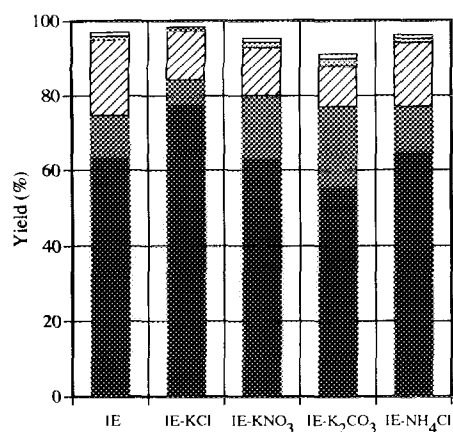


FIG. 5. Effect of different additives on catalytic performance. (■) Benzene; (■) *i*-C₆; (▨) C1–C5; (▩) MCP; (□) others.

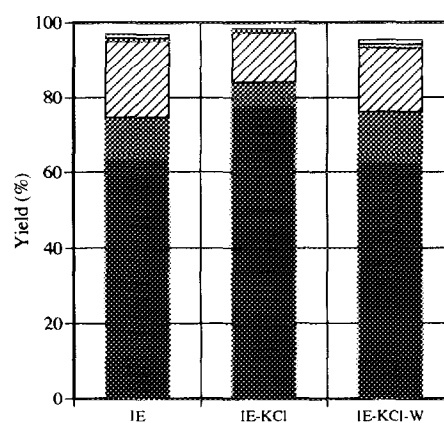


FIG. 6. Effect of water washing on catalytic performance. (■) Benzene; (■) *i*-C₆; (▨) C1–C5; (▩) MCP; (□) others.